



INGENIERÍA CIVIL

Programa de Doctorado en Ingeniería

Línea de Investigación

INGENIERÍA DEL AGUA Y DEL AMBIENTE

50 AÑOS
POSGRADOS
INGENIERÍA CIVIL

Área Curricular de Ingeniería Civil y Agrícola
Facultad de Ingeniería
Sede Bogotá



UNIVERSIDAD
NACIONAL
DE COLOMBIA



HYDROGEOCHEMICAL PROCESSES AND ISOTOPES ANALYSIS. Case of study: “La Línea Tunnel”, Colombia

Adriana PIÑA-FULANO

Tutor: Prof. Leonardo DONADO

Programa de Doctorado en Ingeniería

INGENIERÍA CIVIL

Área Curricular de Ingeniería Civil y Agrícola

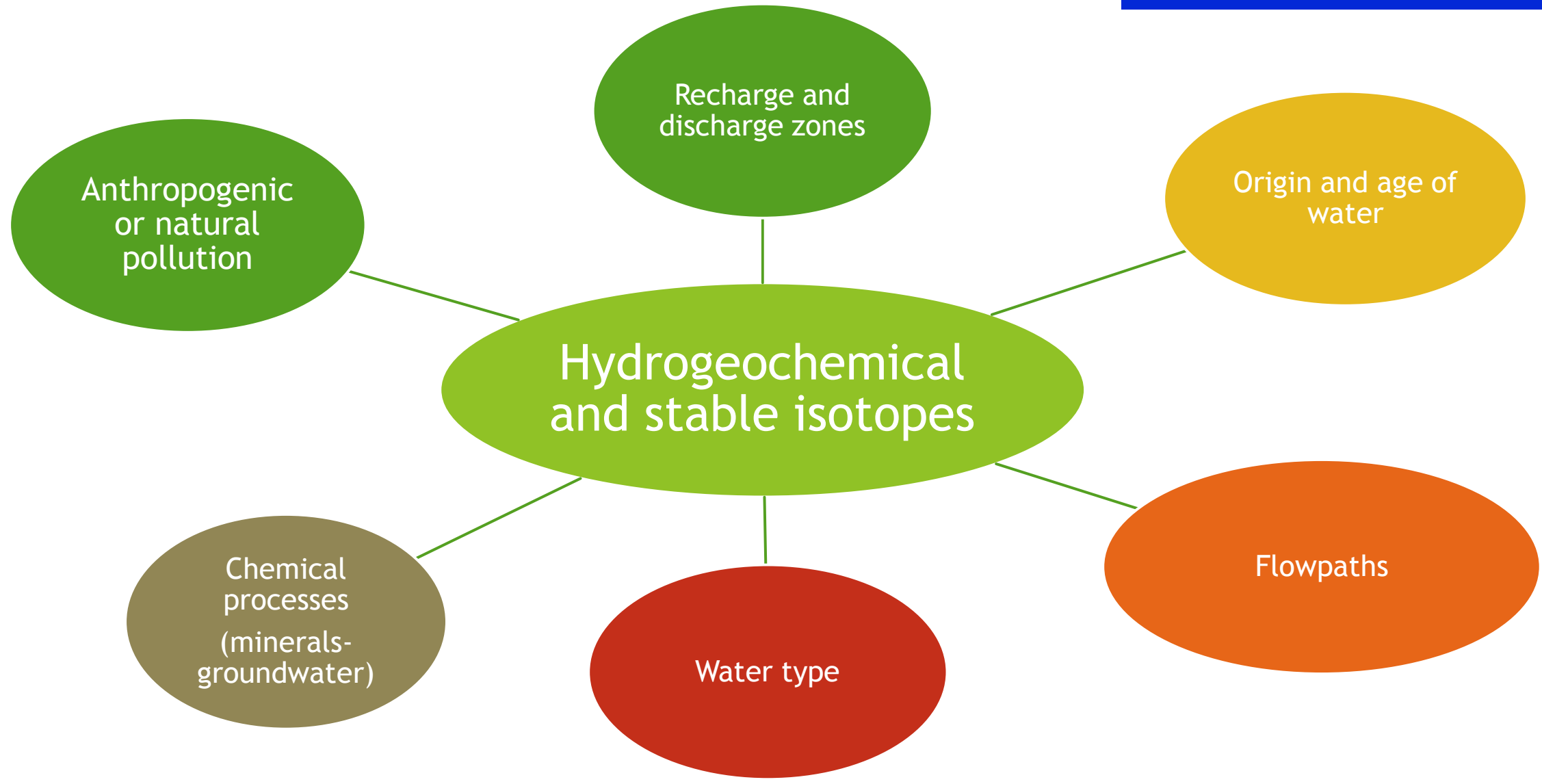
SEDIC
2016

Línea de Investigación en

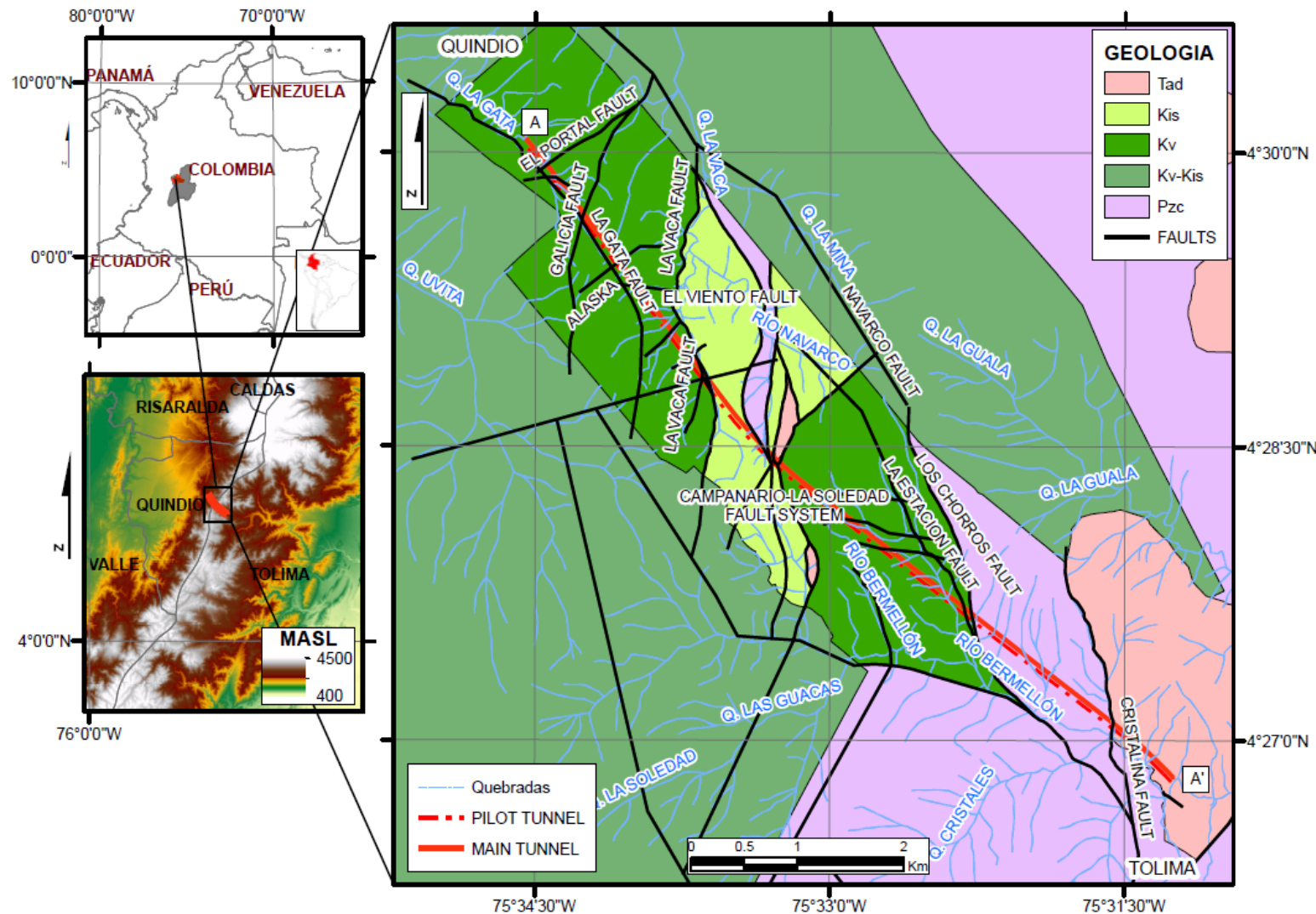
INGENIERÍA DEL AGUA Y DEL AMBIENTE

CONTENT

- ▶ INTRODUCTION
- ▶ METHODOLOGY
- ▶ DATA ANALYSIS
- ▶ RESULTS
- ▶ CONCLUSIONS



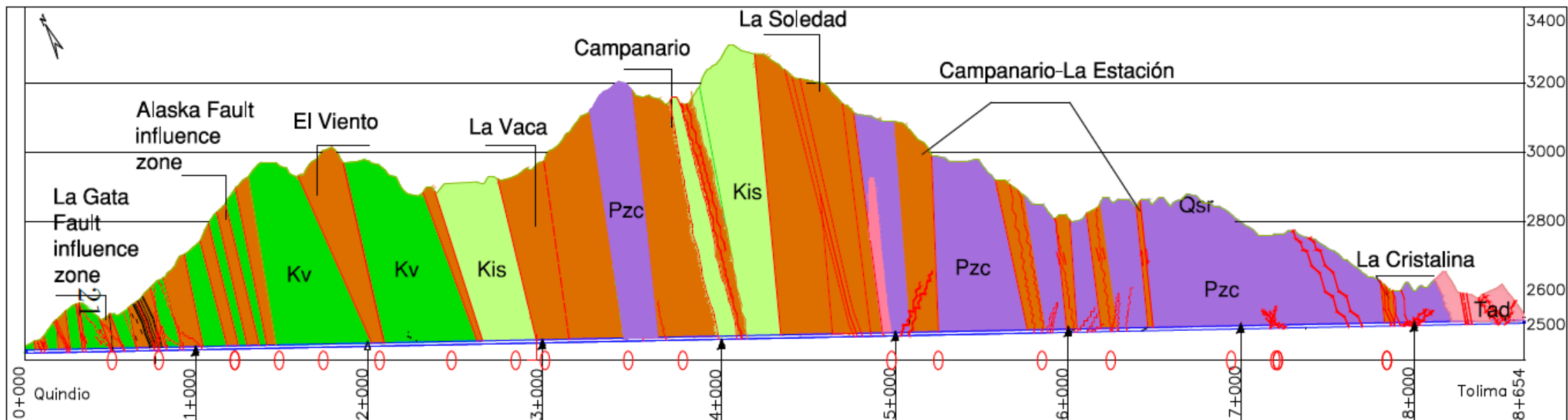
“STUDY CASE: THE LA LÍNEA TUNNEL”



Geographical situation, project location and local geology description

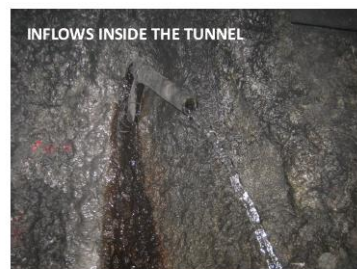
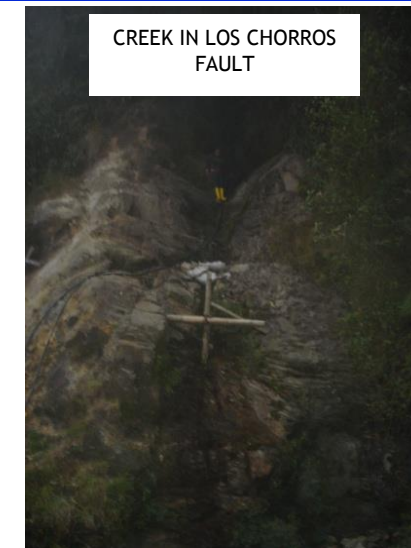
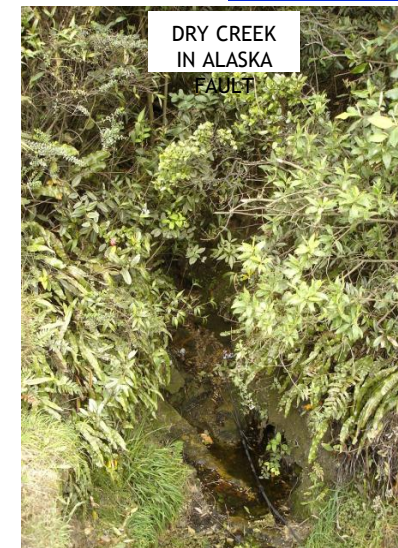
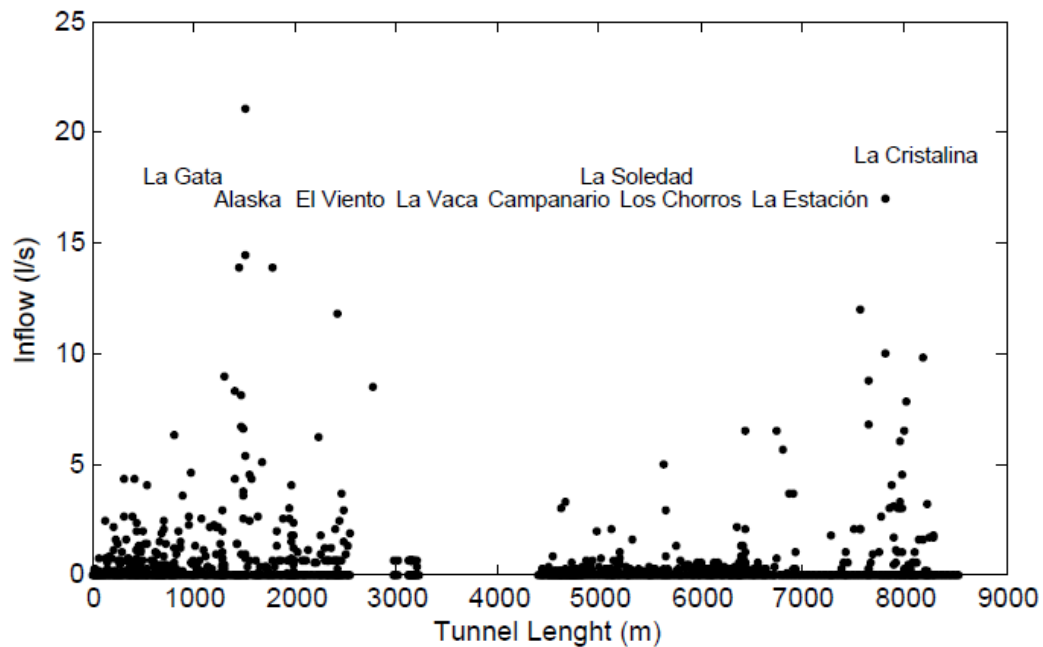
INGENIERÍA CIVIL

GEOLOGIC PROFILE

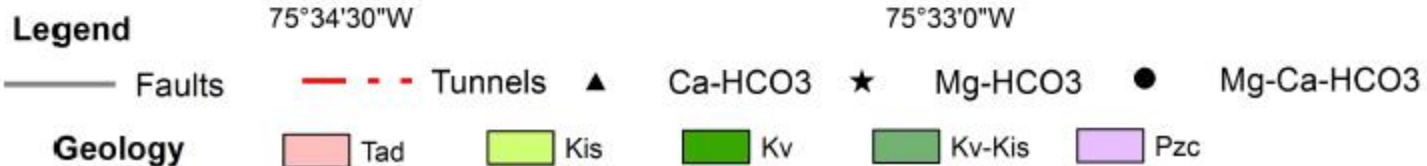
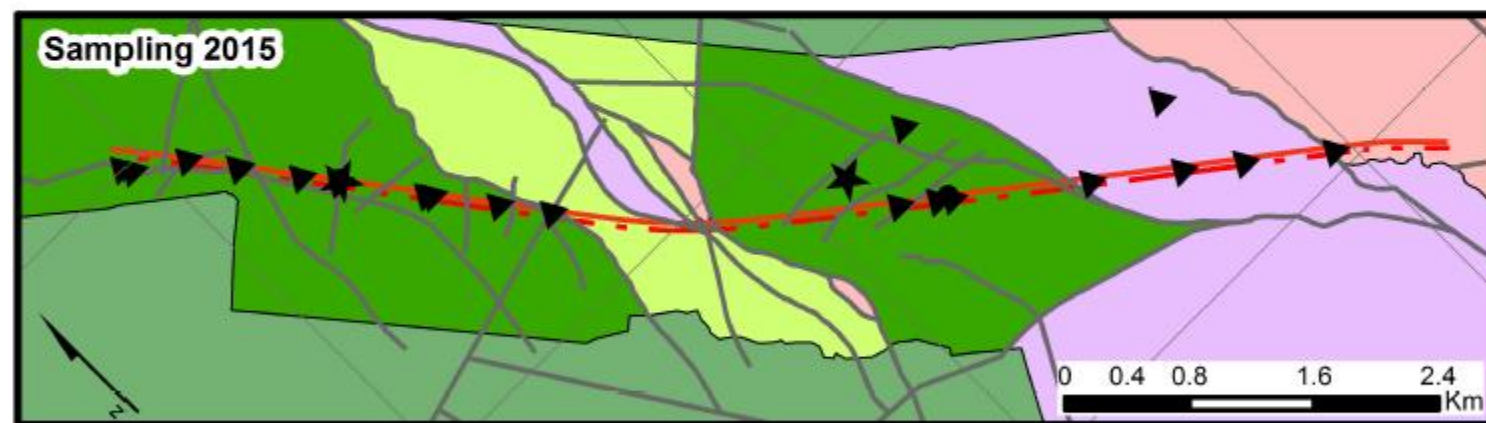
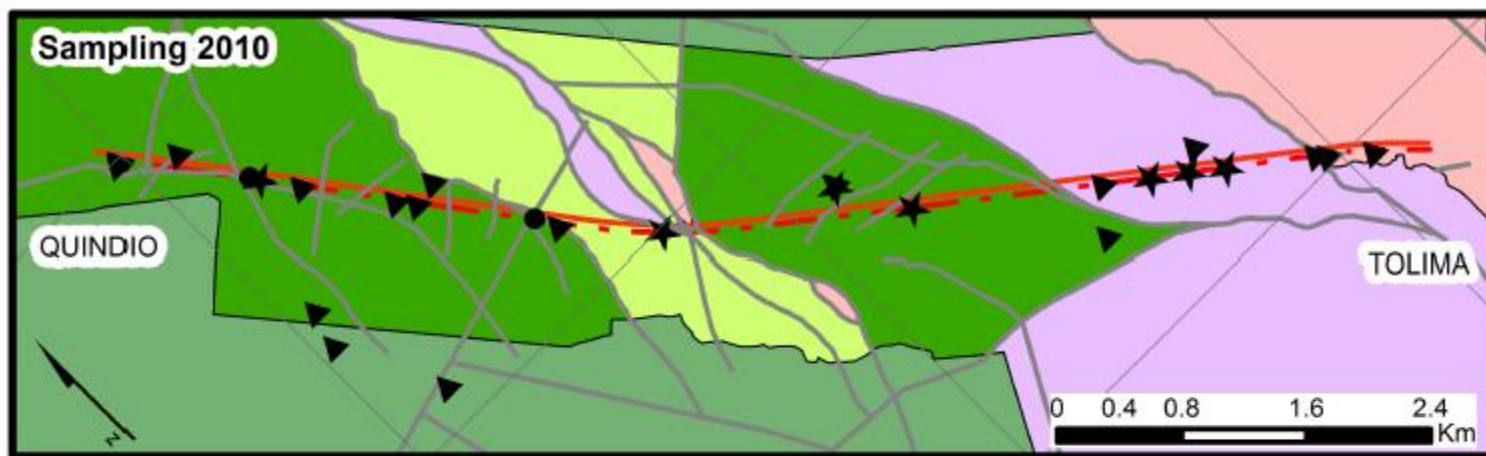


LEGEND

	Qsr: Volcanic ashes, residual soils and saprolites.		Kis Sedimentary member of Quebradagrande group
	Tad: Igneous hipoabiasales rocks		Kv Volcanic member of Quebradagrande group
	Fracture zone		Pzc Cajamarca Group
	Fault		Sampling borehole



Sample locations



► FIELD WORK

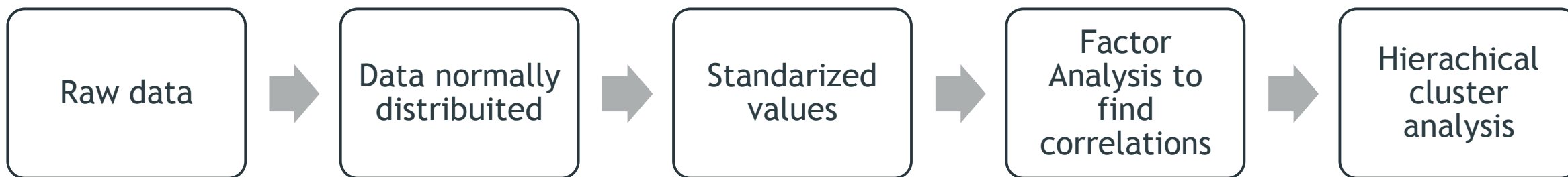
- Sampling campaigns in 2010 and 2015 (60 samples).
- Collection of water samples in surface and inside the tunnel following the Colombian regulation (IDEAM).
- Primary physico-chemical parameters were measured in field (pH, electrical conductivity, temperature and dissolved oxygen) using portable multi-parameter probes.
- Samples were collected in 1000 ml plastic bottles for physico-chemical analysis and 250 ml amber plastic bottles for the stable isotopes.
- Laboratories for the physico-chemical and Stable isotopes analyses:
 - Accredited laboratory of Environmental Engineering of Universidad Nacional de Colombia in Bogotá.
 - University of Waterloo in Canada.
- Measured parameters: Ca^{2+} , Mg^{2+} , K^+ , Na^+ , Cl^- , F^- , NO_3^- , NO_2^- , SO_4^{2-} , Fe, Mn, Si, HCO_3^- , TDS

► DATA ANALYSIS

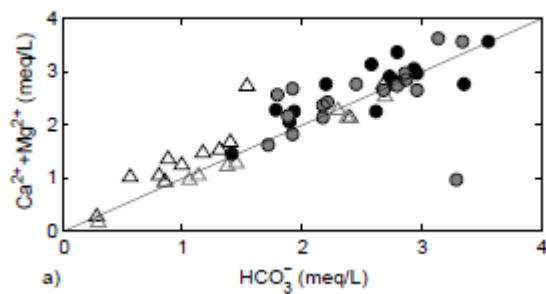
- Statistical analysis were performed in samples with charge balance error below 10%.
- **Multivariate statistical analysis** (Güller et al. 2002, Montcoudiol et al. 2014 and Ghesquiere et al. 2015).
- Graphical analysis
- Stable isotopes analysis

► RESULTS

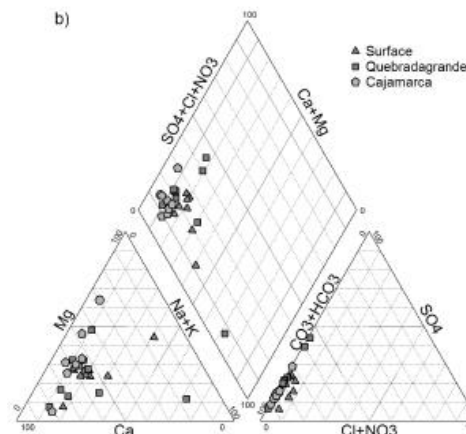
Multivariate statistical analysis



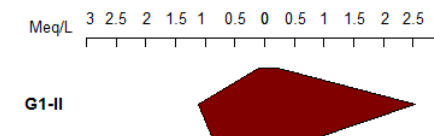
Graphical analysis



Correlations for main elements



Pipper Diagrams



Stiff Diagrams

Stable isotopes analysis

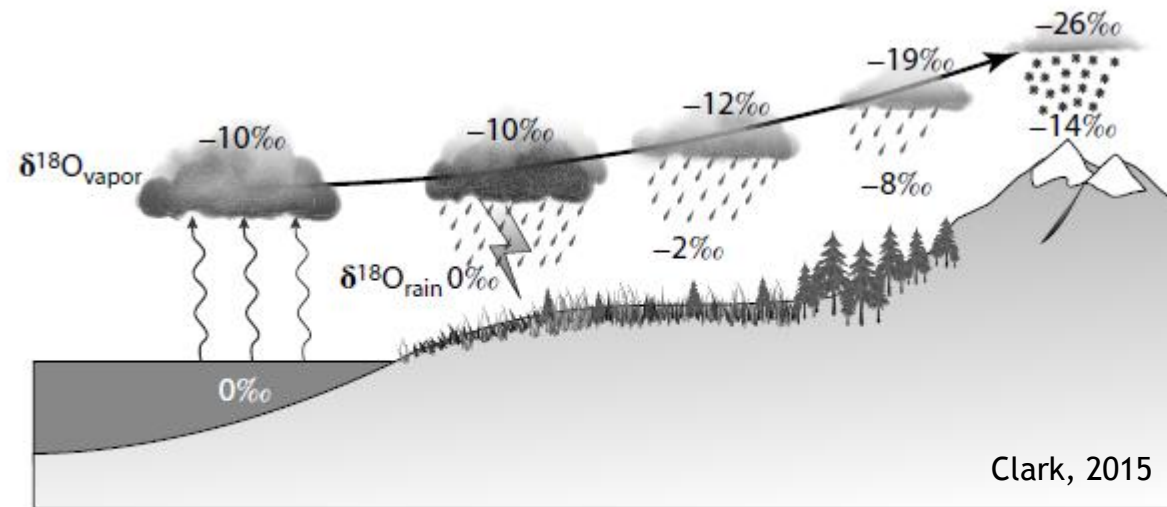
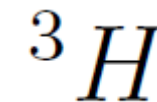


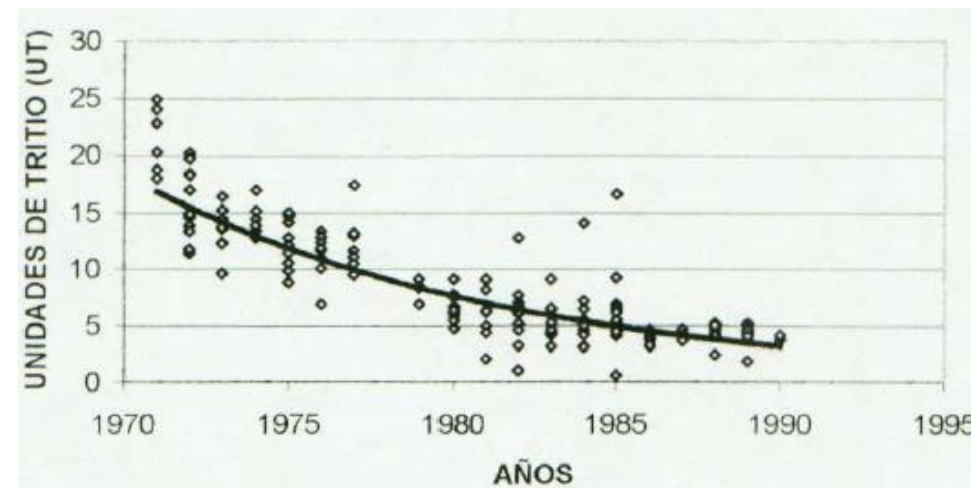
FIGURE 5.4 The evolution in the ¹⁸O content of precipitation according to an ideal Rayleigh distillation during rainout. Deuterium follows a similar depletion trend.

$$\delta^2 H = \delta^{18} O + 10\text{‰ SMOW}$$

Global Meteoric Line, Craig, 1961



- Its introduction to the hydrologic cycle was first in 1952, as a result of large-scale atmospheric testing of thermonuclear bombs.



Tritium evolution (Ingeominas, 2001)

Parameter	S-I	S-II	T-I	T-II
	AVG±SD	AVG±SD	AVG±SD	AVG±SD
pH	7.71±0.87	8.20±0.26	9.03±0.83	8.23±0.10
EC	152.8±89.17	247.3±131.1	301.5±72.05	253.6±43.41
Na ⁺	2.08±0.63	7.38±4.45	4.79±2.25	11.6±11.8
Ca ²⁺	19.60±10.00	20.0±10.5	27.3±6.69	34.60±8.75
Mg ²⁺	6.43±3.23	5.69±2.73	16.0±6.58	9.21±5.74
K ⁺	0.94±0.48	1.52±0.59	0.79±0.54	0.70±0.57
Mn ²⁺	0.05±7.24	0.05±0.00	0.06±0.14	0.03±0.03
Fe ⁺³	0.21±0.56	0.36±0.19	0.04±0.00	0.40±0.98
HCO ₃ ⁻	75.74±42.95	103.8±50.46	156.2±36.53	151.5±33.40
Cl ⁻	0.53±0.68	2.62±2.45	1.23±1.51	0.51±0.23
SO ₄ ²⁻	14.50±12.4	19.30±13.3	29.2±15.20	29.60±17.10
NO ₃ ⁻	0.16±0.13	0.13±0.07	0.11±0.04	0.11±0.05
SiO ₂	30.73±6.04	22.02±4.92	4.82±6.95	20.52±4.44
TDS	154.17±179.13	147.78±71.79	187.53±40.00	409.35±346.20
δ ¹⁸ O (‰)	NA	-11.20±0.53	NA	-11.30±0.60
δ ² H (‰)	NA	-78.97±3.97	NA	-81.30±4.02
³ H (TU)	NA	NA	NA	i 6

S : Surface samples / T : Tunnel samples
I : 2010 / II : 2015

Higher
concentrations in
tunnel samples

Programa de Doctorado en Ingeniería

INGENIERÍA CIVIL

Área Curricular de Ingeniería Civil y Agrícola

Línea de Investigación en

INGENIERÍA DEL AGUA Y DEL AMBIENTE

Parameter	S-I AVG±SD	S-II AVG±SD	T-I AVG±SD	T-II AVG±SD
pH	7.71±0.87	8.20±0.26	9.03±0.83	8.23±0.10
EC	152.8±89.17	247.3±131.1	301.5±72.05	253.6±43.41
Na ⁺	2.08±0.63	7.38±4.45	4.79±2.25	11.6±11.8
Ca ²⁺	19.60±10.00	20.0±10.5	27.3±6.69	34.60±8.75
Mg ²⁺	6.43±3.23	5.69±2.73	16.0±6.58	9.21±5.74
K ⁺	0.94±0.48	1.52±0.59	0.79±0.54	0.70±0.57
Mn ²⁺	0.05±7.24	0.05±0.00	0.06±0.14	0.03±0.03
Fe ³⁺	0.21±0.56	0.36±0.19	0.04±0.00	0.40±0.98
HCO ₃ ⁻	75.74±42.95	103.8±50.46	156.2±36.53	151.5±33.40
Cl ⁻	0.53±0.68	2.62±2.45	1.23±1.76	0.51±0.23
SO ₄ ²⁻	14.50±12.4	19.30±13.3	29.2±15.20	29.60±17.10
NO ₃	0.16±0.13	0.13±0.07	0.11±0.04	0.11±0.05
SiO ₂	30.73±6.04	22.02±4.92	4.82±6.95	20.52±4.44
TDS	154.17±179.13	147.78±71.79	187.53±40.00	409.35±346.20
δ ¹⁸ O (‰)	NA	-11.20±0.53	NA	-11.30±0.60
δ ² H (‰)	NA	-78.97±3.97	NA	-81.30±4.02
³ H (TU)	NA	NA	NA	i 6

- ▶ Higher in 2010 than in 2015
- ▶ Storage water in the massif

- ▶ Carbonate reactions
- ▶ Weathering of **silicate** or **carbonate** rocks

- ▶ Leaching of igneous or sedimentary rocks

S : Surface samples / T : Tunnel samples
I : 2010 / II : 2015

Programa de Doctorado en Ingeniería

INGENIERÍA CIVIL

Área Curricular de Ingeniería Civil y Agrícola

Parameter	S-I	S-II	T-I	T-II
	AVG±SD	AVG±SD	AVG±SD	AVG±SD
pH	7.71±0.87	8.20±0.26	9.03±0.83	8.23±0.10
EC	152.8±89.17	247.3±131.1	301.5±72.05	253.6±43.41
Na ⁺	2.08±0.63	7.38±4.45	4.79±2.25	11.6±11.8
Ca ²⁺	19.60±10.00	20.0±10.5	27.3±6.69	34.60±8.75
Mg ²⁺	6.43±3.23	5.69±2.73	16.0±6.58	9.21±5.74
K ⁺	0.94±0.48	1.52±0.59	0.79±0.54	0.70±0.57
Mn ²⁺	0.05±7.24	0.05±0.00	0.06±0.14	0.03±0.03
Fe ³⁺	0.21±0.56	0.36±0.19	0.04±0.00	0.40±0.98
HCO ₃ ⁻	75.74±42.95	103.8±50.46	156.2±36.53	151.5±33.40
Cl ⁻	0.53±0.68	2.62±2.45	1.23±1.7	0.51±0.23
SO ₄ ²⁻	14.50±12.4	19.30±13.3	29.2±15.20	29.60±17.10
NO ₃ ⁻	0.16±0.13	0.13±0.07	0.11±0.04	0.11±0.05
SiO ₂	30.73±6.04	22.02±4.92	4.82±6.95	20.52±4.44
TDS	154.17±179.13	147.78±71.79	187.53±40.00	409.35±346.20
δ ¹⁸ O (‰)	NA	-11.20±0.53	NA	-11.30±0.60
δ ² H (‰)	NA	-78.97±3.97	NA	-81.30±4.02
³ H (TU)	NA	NA	NA	i 6

► 54 samples were kept in order to guarantee the quality of the analysis (charge balance error below 10%).

11 parameters were considered:

Positively skewed

pH Na⁺ Mn²⁺ Fe Mg²⁺ Cl⁻ K⁺

Ca²⁺ HCO₃⁻ SO₄²⁻ Si

Normally distributed

S : Surface samples / T : Tunnel samples

I : 2010 / II : 2015

Programa de Doctorado en Ingeniería

INGENIERÍA CIVIL

Área Curricular de Ingeniería Civil y Agrícola

Línea de Investigación en

INGENIERÍA DEL AGUA Y DEL AMBIENTE

Factor Analysis

Parameter	FA-I			FA-II		
	Factor 1	Factor 2	Factor 3	Factor 1	Factor 2	Factor 3
pH	0.650	-0.457	-0.270	0.261	0.379	0.285
Na ⁺	0.653	-0.363		0.22	0.521	0.355
Ca ²⁺	0.700	0.278	0.271	0.782	0.1	
Mg ²⁺	0.913	-0.238		0.588	0.474	
K ⁺		0.172	0.564	-0.775	0.398	0.486
Mn ²⁺	-0.149	0.938	0.305	-0.516	-0.114	0.245
Fe	-0.314			-0.362		0.248
HCO ₃ ⁻	0.886	-0.276	0.365	0.598	0.792	-0.101
Cl ⁻	0.346			-0.314		0.635
SO ₄ ²⁻	0.771	0.518	-0.364	0.81	-0.212	0.543
Si	0.256	0.107	0.273		0.02	
Explained variance	3.866	1.745	0.915	3.182	1.537	1.289
Explained variance (%)	0.351	0.159	0.083	0.289	0.14	0.117
Cumulative % of variance	35.1	51.0	59.3	28.9	42.9	54.6

Programa de Doctorado en Ingeniería

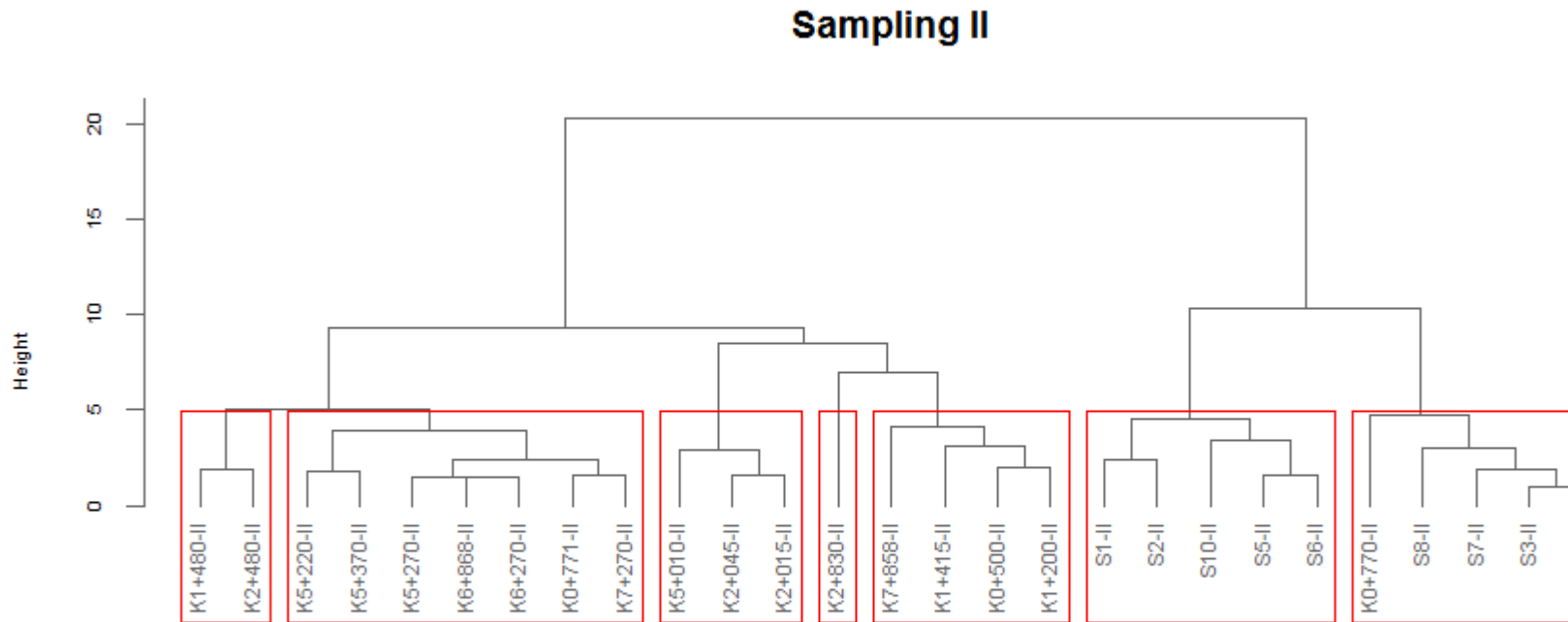
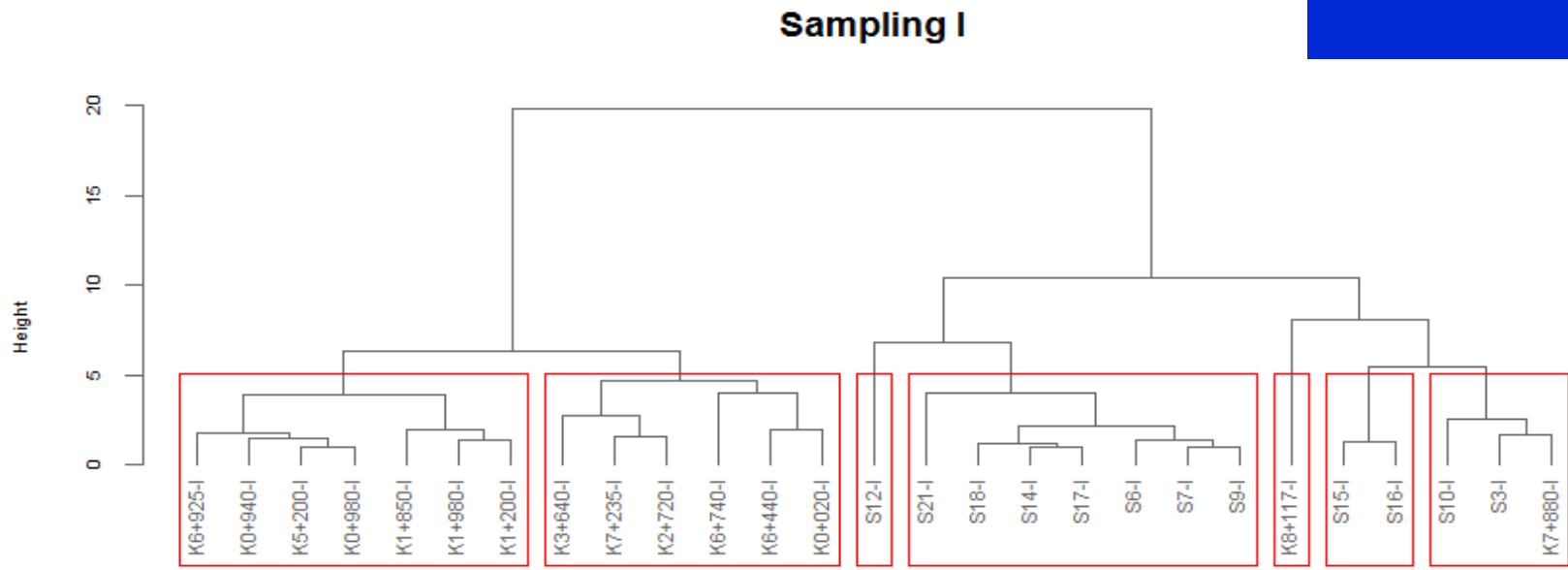
INGENIERÍA CIVIL

Área Curricular de Ingeniería Civil y Agrícola

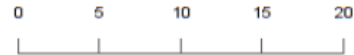
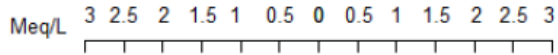
Línea de Investigación en

INGENIERÍA DEL AGUA Y DEL AMBIENTE

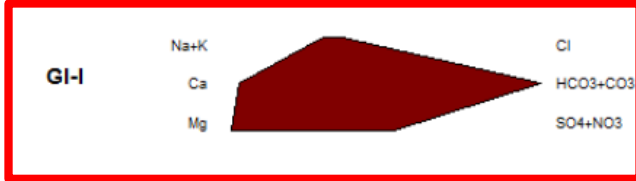
Hierarchical cluster analysis



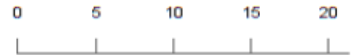
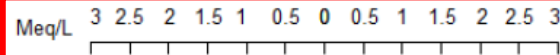
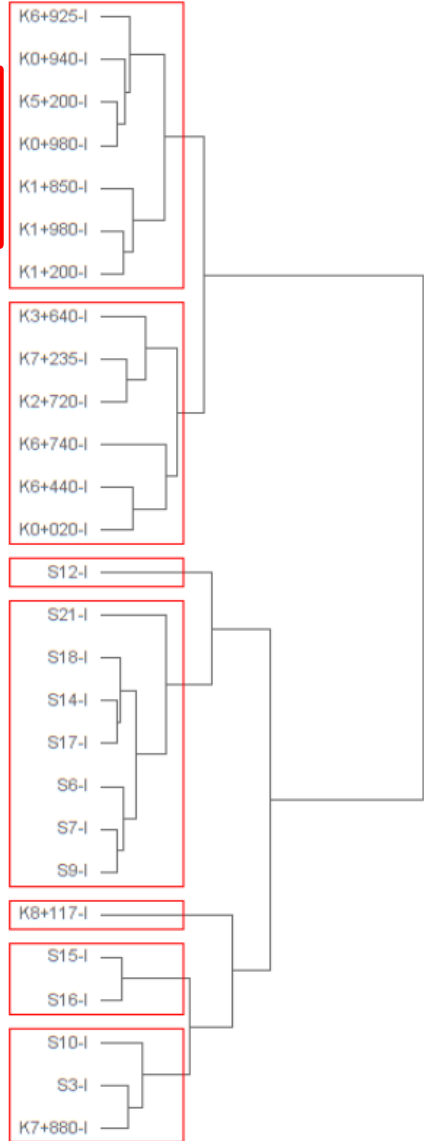
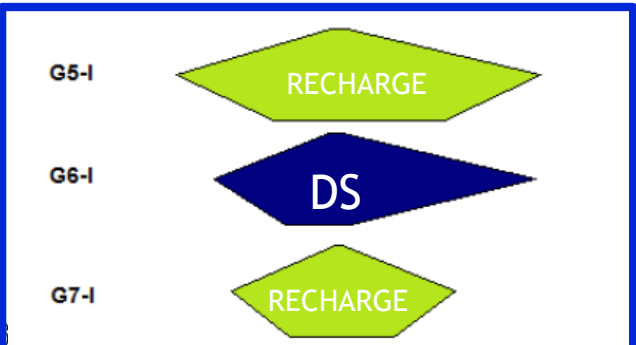
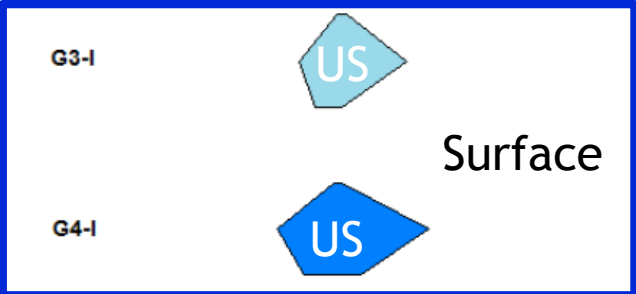
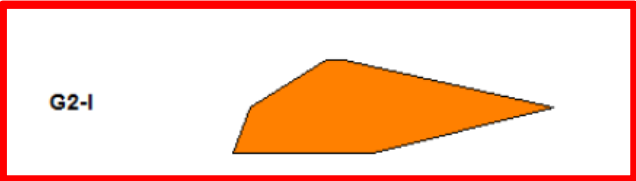
Stiff Diagrams



Kv



Kis-Pzc



G1-II

G2-II

G3-II

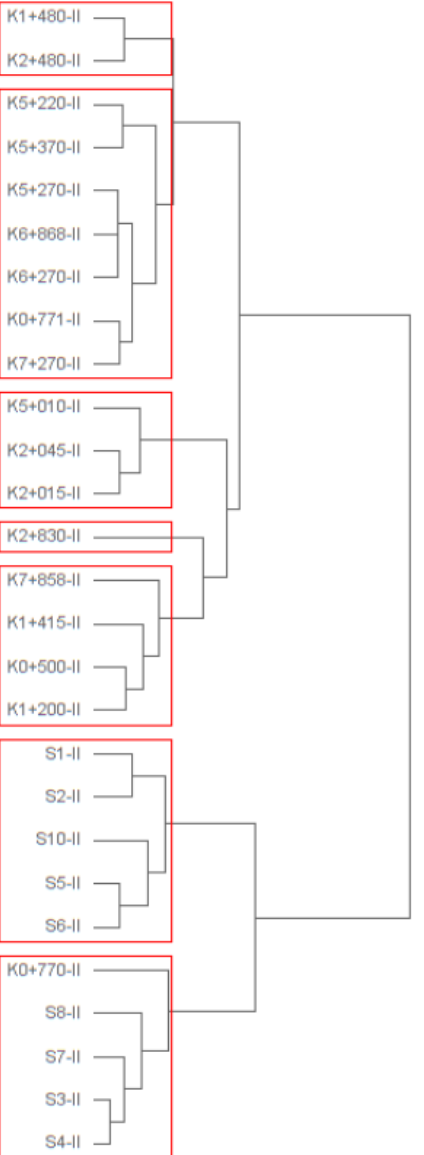
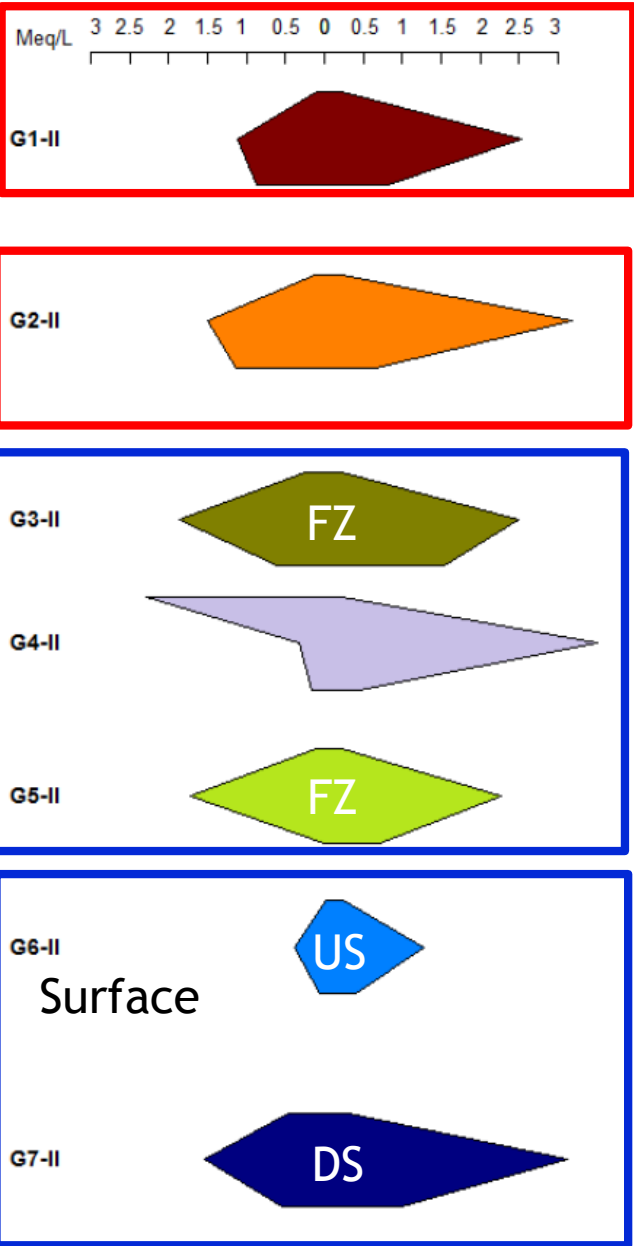
G4-II

G5-II

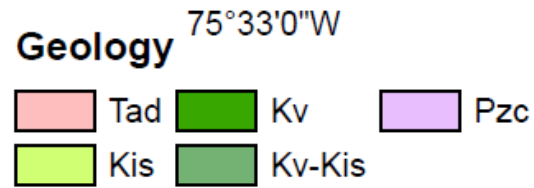
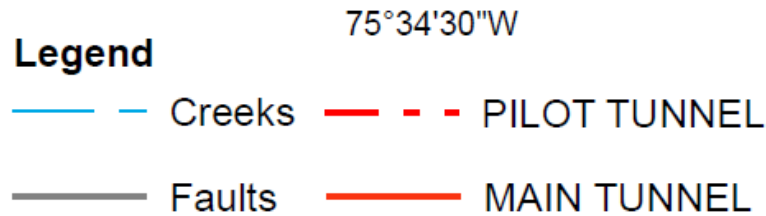
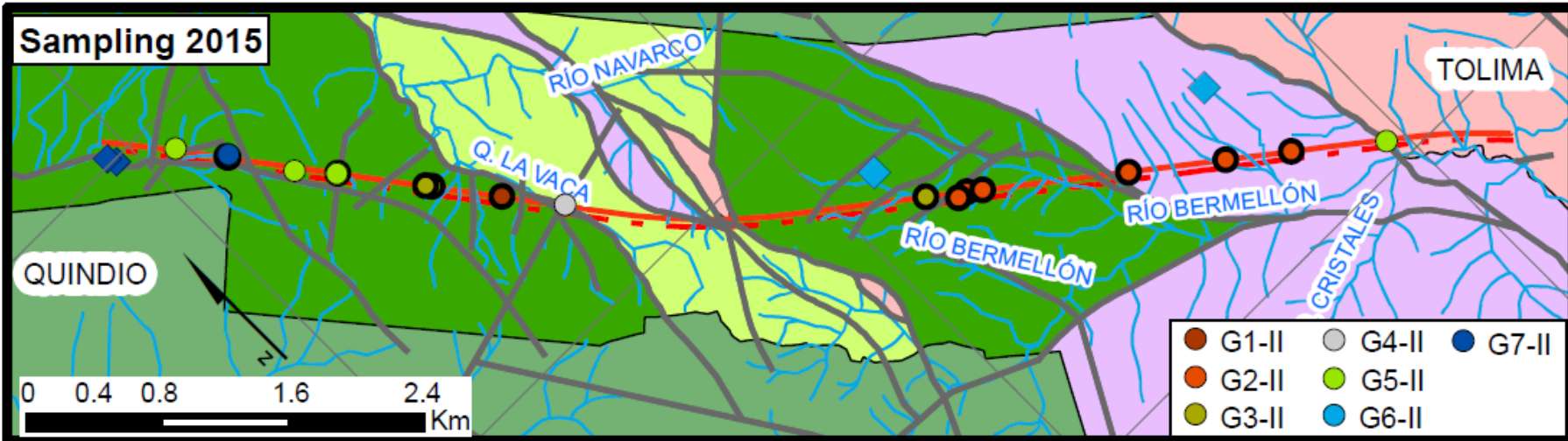
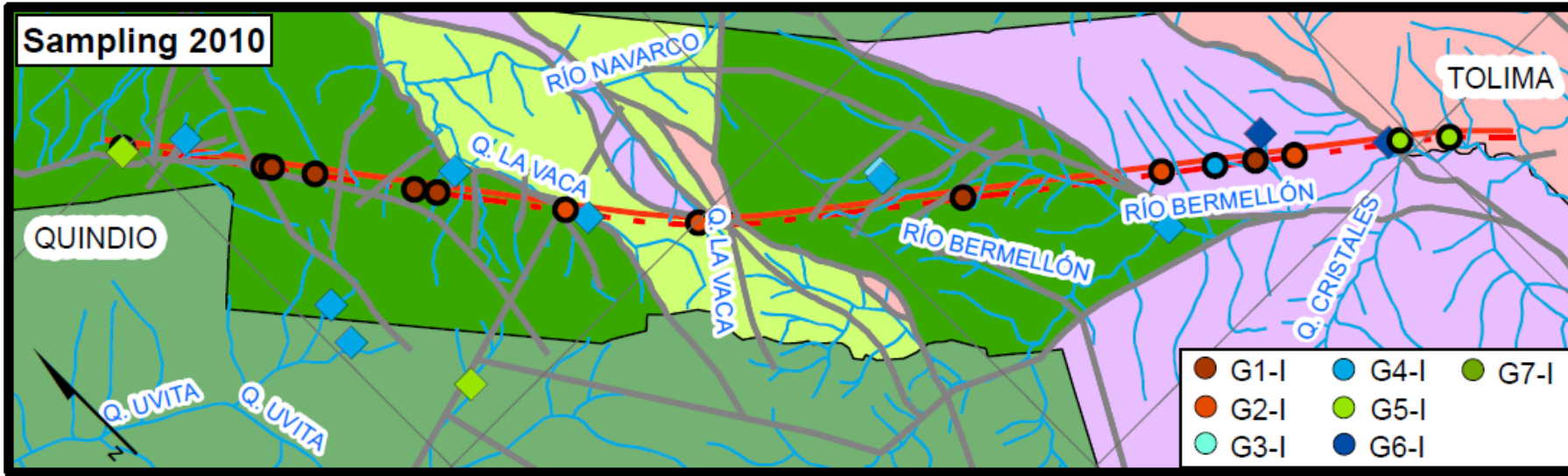
G6-II

G7-II

Sampling I



Sampling II



Piper Diagrams

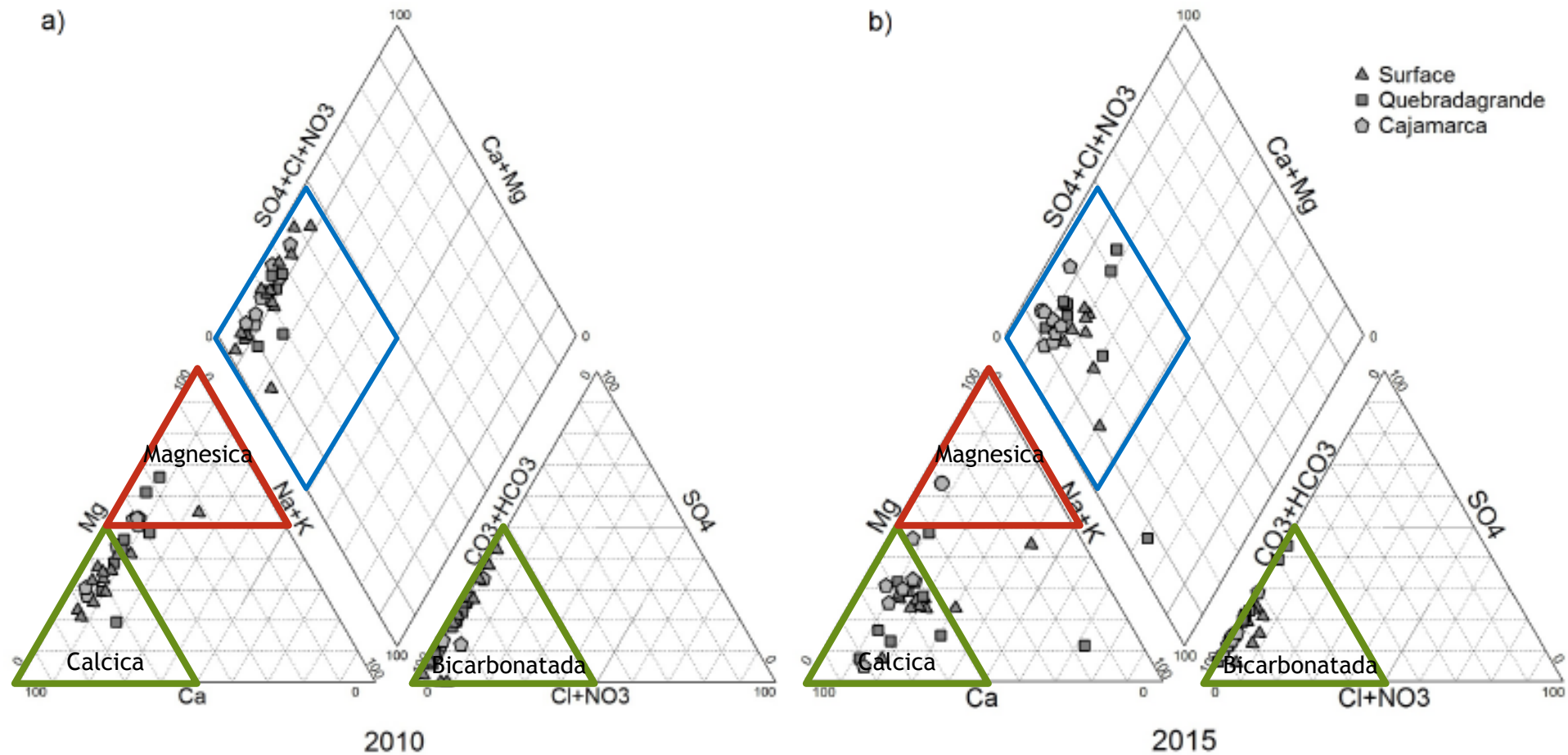


Figure 6: Piper Diagram, a) 2010 and b) 2015 sampling

Programa de Doctorado en Ingeniería

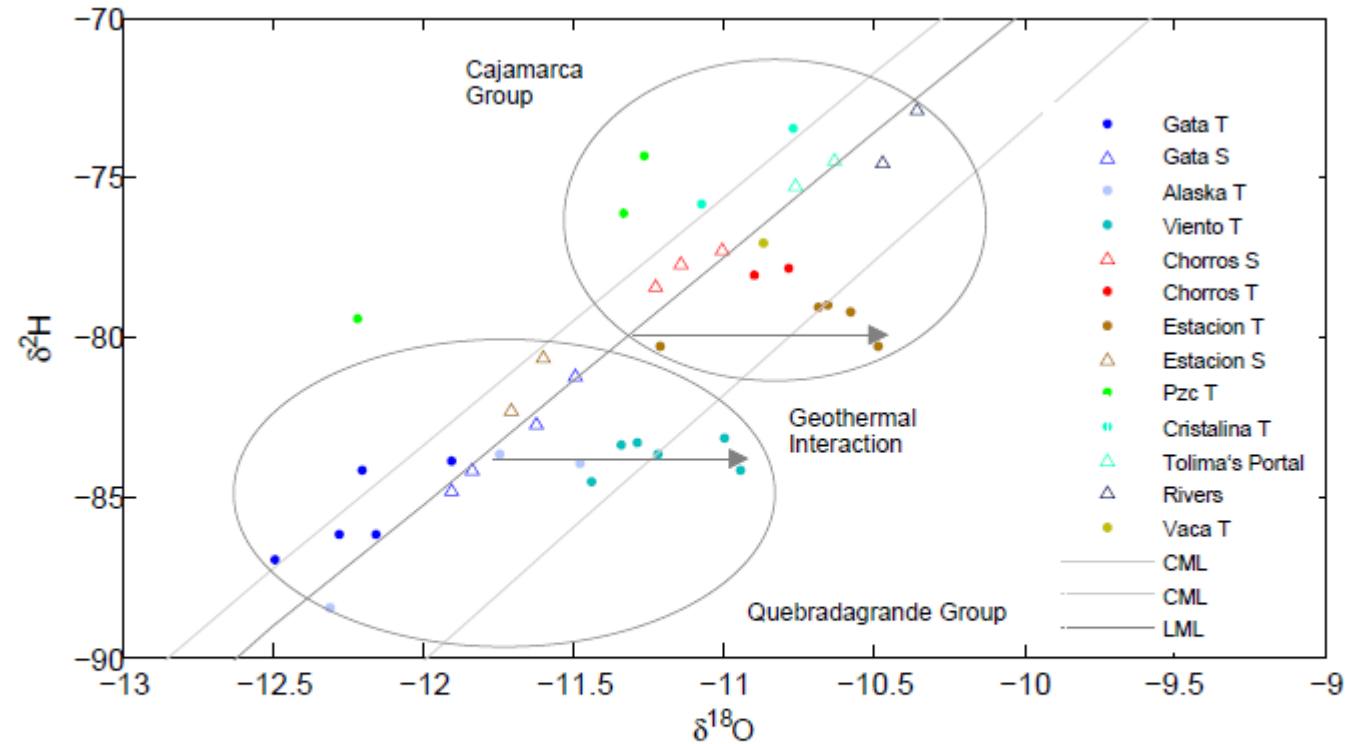
INGENIERÍA CIVIL

Área Curricular de Ingeniería Civil y Agrícola

Línea de Investigación en

INGENIERÍA DEL AGUA Y DEL AMBIENTE

Stable Isotopes



CML

$$\delta^2H = (8.03 \pm 0.28)\delta^{18}O + 9.6$$

Rodríguez, 2004

LML

$$\delta^2H = 7.7\delta^{18}O + 7.2$$

Figure 10: δ^2H vs $\delta^{18}O$. The Colombian Meteoric Line (CML) and Local Meteoric Line (LML). Triangles for surface samples and circles for inflows inside the tunnel

Programa de Doctorado en Ingeniería

INGENIERÍA CIVIL

Área Curricular de Ingeniería Civil y Agrícola

Stable Isotopes

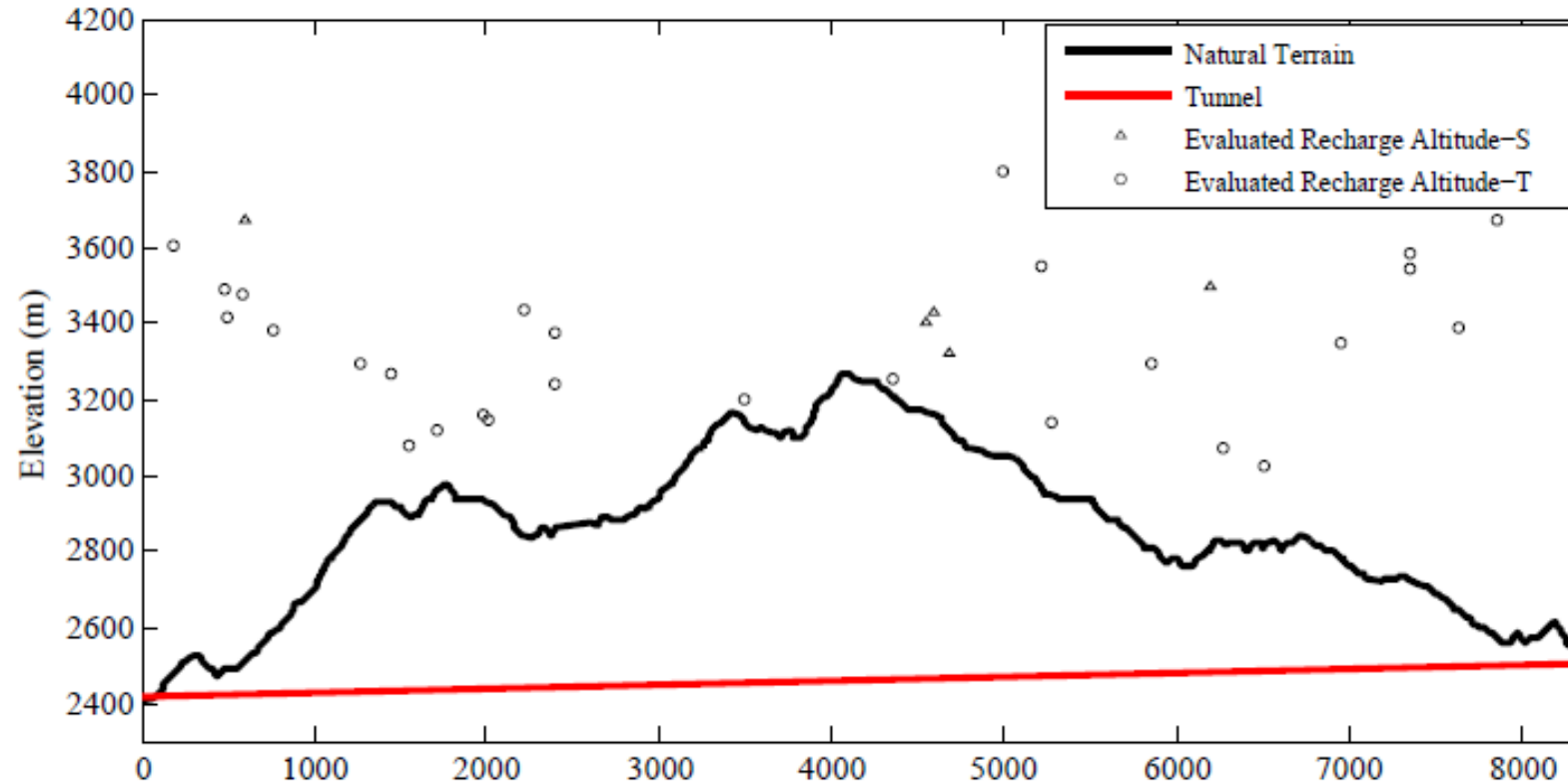


Figure 11: Evaluated Recharge Altitude using $\delta^{18}O$

$$\delta^2H = 7.7\delta^{18}O + 7.2$$

Rodríguez, 2004

CONCLUSIONS

- ▶ Hydrogeochemical and isotopes analysis are useful tools for a better understanding of the hidrogeological behaviour of a highly fractured massif like La Línea mountain.
- ▶ Fractures defined preferential flow paths, connecting surface sources like creeks with underground infrastructure works like tunnels.
- ▶ Most samples are classied by cations as Ca^{2+} in a major proportion followed by Mg^{2+} dominance. According to the anions, all samples are HCO_3^- type.
- ▶ Factor Analysis (FA) and Hierarchical Cluster Analysis (HCA) combined with graphical analysis let us to identify seven clusters for each year and to relate with the geology of the zone.
- ▶ It is observed an evolution of the water type related with the interaction with the host rock.

Stable Isotopes

- ▶ Ideam, Guia para el monitoreo de Aguas Superficiales y Subterranas, Technical Report, 2003.
- ▶ C. Güller, G. D. Thyne, J. E. McCray, K. a. Turner, Evaluation of graphical and multivariate statistical methods for classification of water chemistry data, Hydrogeology Journal 10 (2002) 455-474.
- ▶ N. Montcoudiol, J. Molson, J.-M. Lemieux, Groundwater geochemistry of the Outaouais Region (Quebec, Canada): a regional-scale study, Hydrogeology Journal (2014) 377-396.
- ▶ O. Ghesquiere, J. Walter, R. Chesnaux, A. Rouleau, Scenarios of groundwater chemical evolution in a region of the Canadian Shield based on multivariate statistical analysis, Journal of Hydrology: Regional Studies 4 (2015) 246-266.
- ▶ I. D. Clark, Groundwater Geochemistry and Isotopes, CRC Press, 2015.
- ▶ C. Rodríguez, Línea Meteórica Isotópica de Colombia, Meteorología Colombiana (2004) 43-51.



PREGRADO

INGENIERÍA CIVIL



DOCTORADO EN INGENIERÍA

INGENIERÍA CIVIL



PREGRADO

INGENIERÍA AGRÍCOLA



MAESTRÍA EN INGENIERÍA

ESTRUCTURAS



MAESTRÍA EN INGENIERÍA

GEOECNIA



MAESTRÍA EN INGENIERÍA

RECURSOS HIDRÁULICOS




MAESTRÍA EN INGENIERÍA

TRANSPORTE



MAESTRÍA EN INGENIERÍA

INGENIERÍA AGRÍCOLA




ESPECIALIZACIÓN

ESTRUCTURAS



ESPECIALIZACIÓN

TRÁNSITO, DISEÑO Y SEGURIDAD VIAL



ESPECIALIZACIÓN

SANEAMIENTO



50 AÑOS
POSGRADOS
INGENIERÍA CIVIL
1966 - 2016



Programa de Doctorado en Ingeniería

INGENIERÍA CIVIL

Área Curricular de Ingeniería Civil y Agrícola

Línea de Investigación en

INGENIERÍA DEL AGUA Y DEL AMBIENTE